

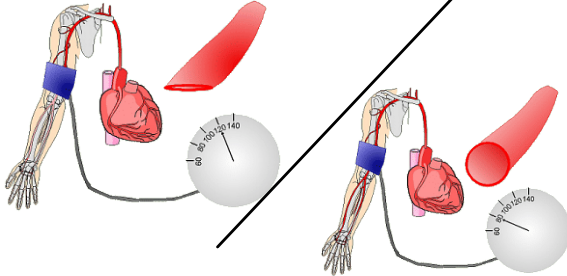
<http://www.sumanasinc.com/webcontent/animations/content/bloodpressure.html>

Blood Pressure:

Force exerted by blood against the inside wall of arteries *& heart*

Systole 120 **Ventricles contracting (High pressure)**
Diastole 80 **Ventricles relaxing (Low pressure)**

Sphygmomanometer-
 Device used to measure blood pressure



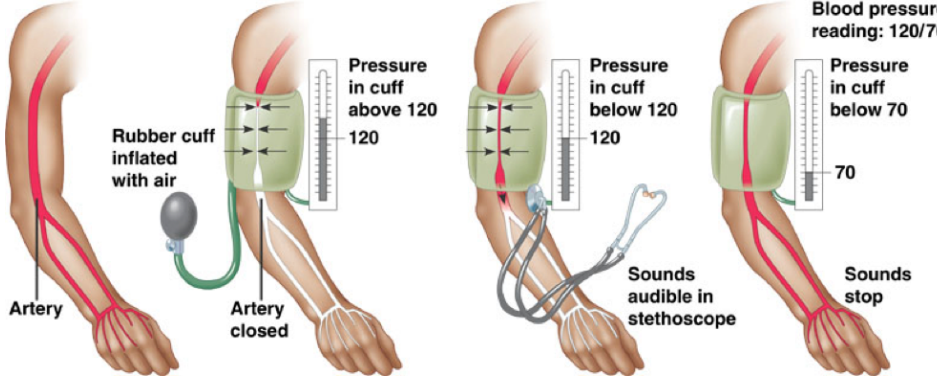
<http://www.sumanasinc.com/webcontent/animations/content/bloodpressure.html>

Systole-
Ventricles contracting (High pressure)

Diastole-
Ventricles relaxing (Low pressure)

Dec 5-6:47 PM

Measurement of blood pressure

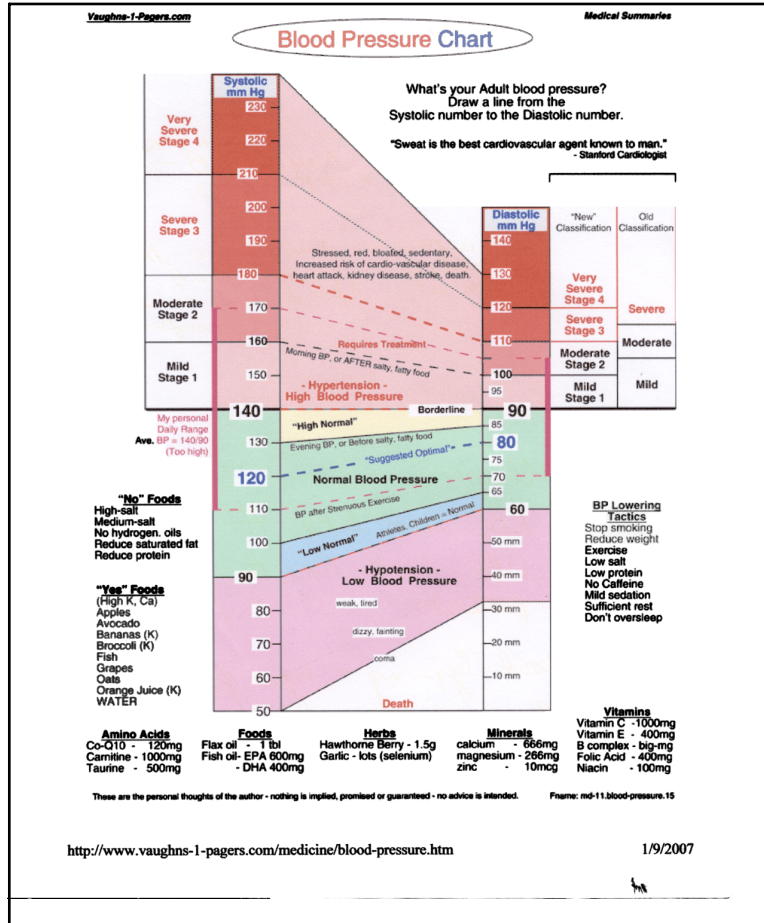


Blood pressure reading: 120/70

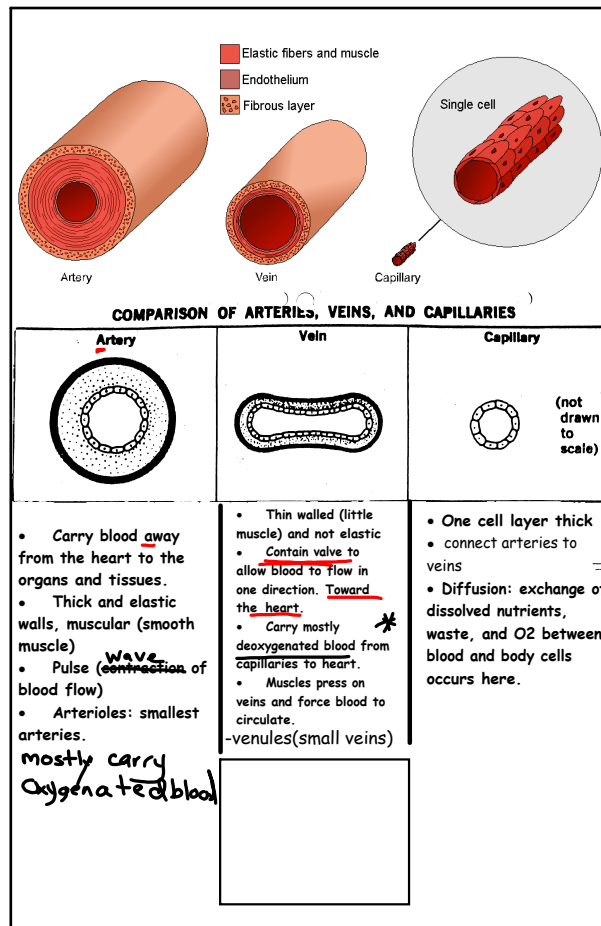
- **High Blood Pressure (hypertension)**
 - ◆ if top number (**systolic** pumping) > 150
 - ◆ if bottom number (**diastolic** filling) > 90

$\frac{150}{90}$ } High - cause damage to heart & Blood vessels

Jan 10-4:12 PM



Jan 7-8:29 AM



Blood vessels